



Year 6 Computing Test

**Practice
Paper**

Identify the best description of what a costume is in Scratch.

- A A change of cloths for a sprite
- B A different sprite
- C Multiply sprites
- D A different appearance of a sprite

Correct Answer: A B C D

Explanation:

.....

.....

.....

.....

.....

.....

Kate collects toys using this algorithm.

trains = 15
trucks = 55
cars = 5

```
IF (cars > trains) THEN
    SEND "Get more trains" TO DISPLAY
ELSE
    SEND "Get more cars" TO DISPLAY
END IF
```

Identify the correct output.

- A Get more trains
- B Get more cars
- C Get more trains
Get more cars
- D No output is displayed

Correct Answer: A B C D

Explanation:

.....

.....

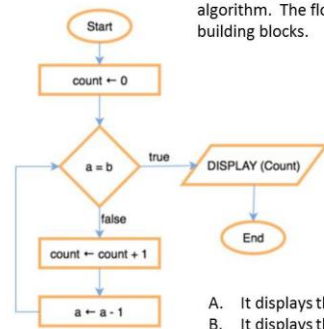
.....

.....

.....

.....

A flowchart is a way to visually represent an algorithm. The flowchart below uses the following building blocks.



Assume a always begins greater than b.

Which of the following statements best describes the behavior of the algorithm depicted in the flowchart?

- A. It displays the sum of a and b (a + b)
- B. It displays the difference between a and b (a - b)
- C. It displays the product of a and b (a * b)
- D. It runs in an infinite loop

Correct Answer: A B C D

Explanation:

.....

.....

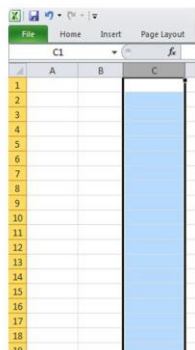
.....

.....

.....

.....

Original question from code.org CC BY-NC-SA



Identify the name of the numbers. They go vertically down the page.

- A Line
- B Row
- C Column
- D Long

Correct Answer: A B C D

Explanation:

.....

.....

.....

.....

.....

.....

What is the name of the area at the bottom of the screen where you can type further information?

- A Speaker Notes
- B Slide Sorter
- C Master Views
- D Annotations



Correct Answer: A B C D

Explanation:

.....

.....

.....

.....

.....

.....

Correct Answer: A B C D

Explanation:

.....

.....

.....

.....

.....

.....

You can make the text on a page appear as if it is being typed.

Which feature of presentation software would you use to do this?

- A Hyperlink
- B Timings
- C Custom Animation
- D Clipboard

Correct Answer: A B C D

Explanation:

.....

.....

.....

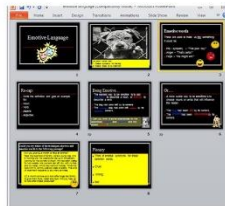
.....

.....

.....

What is the name given to the view of the presentation in the image below?

- A Master Page
- B Layout
- C Slide Sorter
- D Overview



Correct Answer: A B C D

Explanation:

.....

.....

.....

.....

.....

.....

Identify the name of the feature you would use to consistently place a logo in the top corner of each page.

- A Custom Slide Show
- B Links
- C Page Setup
- D Master Page

COMPUTING AT SCHOOL
 EDUCATE · ENGAGE · ENCOURAGE
Part of BCS – The Chartered Institute for IT

Word processors contain collaborative tools.

Which of the following allows people to work together on a document?

- A Comments
- B Themes
- C Illustrations
- D Styles

Correct Answer: A B C D

Explanation:

.....

.....


.....

.....

.....

.....

COMPUTING AT SCHOOL
 EDUCATE · ENGAGE · ENCOURAGE
Part of BCS – The Chartered Institute for IT



In a word processor, text can be displayed against the left or right side of a page.

What name is given to this process?

- A Wrapping
- B Justification
- C Spacing
- D Indenting

Correct Answer: A B C D

Explanation:

.....

.....

.....

.....

.....

.....

COMPUTING AT SCHOOL
 EDUCATE · ENGAGE · ENCOURAGE
Part of BCS – The Chartered Institute for IT

In a word processor, formatting can be copied from one section of text to another.

Identify the tool to do this.

- A Font Style
- B Copy and Paste
- C Proofing
- D Format Painter

Correct Answer: A B C D

Explanation:

.....

.....

.....

.....

.....

.....

COMPUTING AT SCHOOL
 EDUCATE · ENGAGE · ENCOURAGE
Part of BCS – The Chartered Institute for IT

There are many ways to draw attention to a heading using a word processor.

Which of the following would NOT draw attention to heading?

- A Underline
- B Spacing
- C Italic
- D Bold

Correct Answer: A B C D

Explanation:

.....

.....

.....

.....

.....

.....